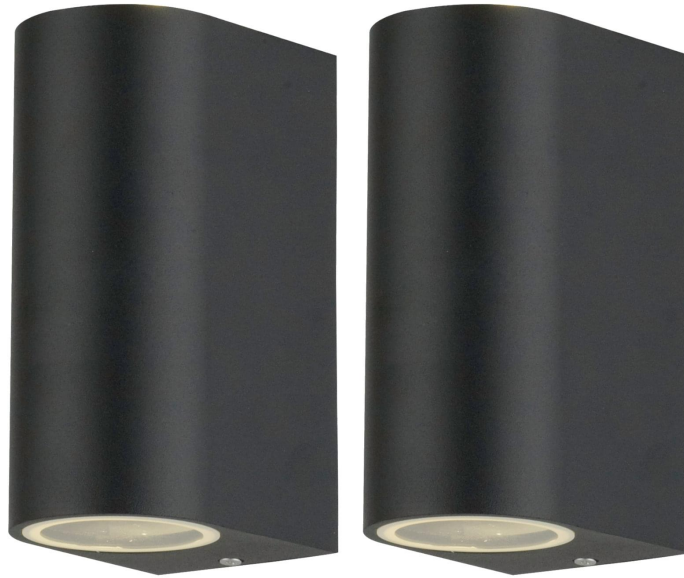


Set of 2 Drayton - Black Outdoor Twin Wall Lights



LIGHT SOURCE DATA

- 4 x 35W Max GU10 Halogen (required)
- Lamp direction - Upwards & Downwards
- Lamp shape - Reflector/Pear Shape
- Dimmable
- Energy class: Not applicable

DIMENSION DATA

- Height 145mm
- Width 66mm
- Depth 95mm

- Weight 0.98kg

SPECIFICATION

- Manufacturer warranty for 2 years from date of purchase
- Black and clear glass
- IP44
- No
- Class I - Single Insulated, Earthed
- 240V
- Assembly required? No
- CE Marking, UKCA Marking, Energy Efficient, Energy Saving

CERTIFICATION



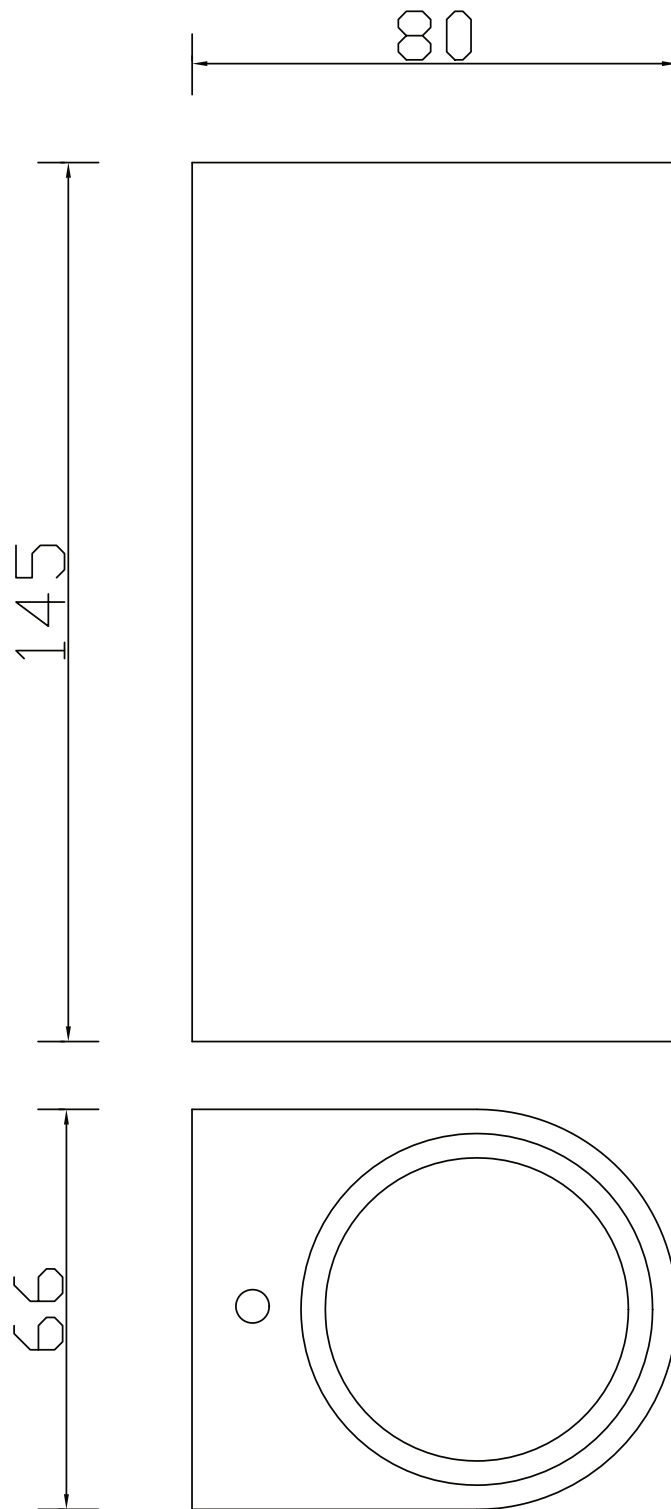
CONTACT

www.firstchoicelighting.co.uk

info@firstchoicelighting.co.uk

FCL-12706X2

Set of 2 Drayton - Black Outdoor Twin Wall Lights



CERTIFICATION



CONTACT

www.firstchoicelighting.co.uk

info@firstchoicelighting.co.uk

ISSUE DATE 16/02/2023

PAGE 2