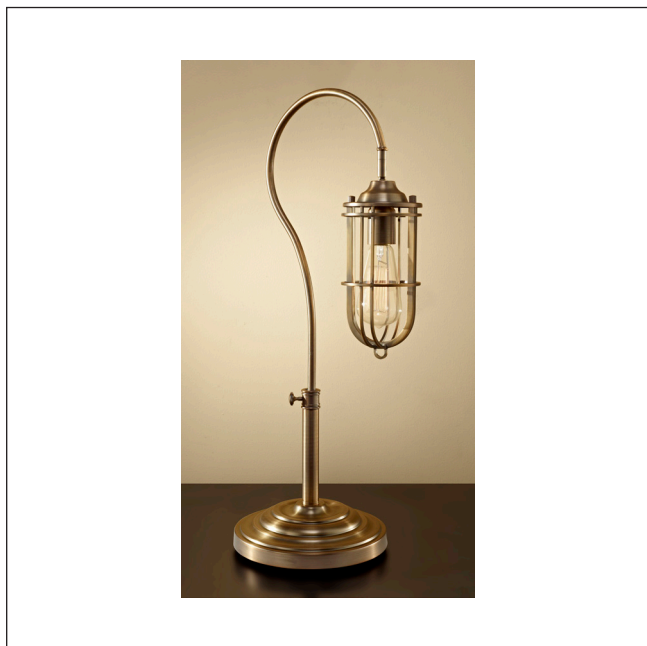


MODEL: Urban Renewal 1 Light Table Lamp



These fittings are influenced by what were seen as functional and industrial lamps of the 1900's. The lamp cage, once a safety feature, now evokes a stylish vintage feel. Using Edison style lamps, they are ideal for use in restaurants, bars, kitchens and anywhere that suits a more heavy duty looking fitting.

1. Stock Code	FE-URBANRWL-TL1	15. Base Height (mm)	
2. Product Type	Table Lamp	16. Base Diameter (mm)	
3. Family	Urban Renewal	17. Base Depth (mm)	
4. Finish	Dark Antique Brass	18. Shade Height (mm)	
5. Class	Class I	19. Shade Depth (mm)	
6. Voltage	220-240v 50hz	20. Shade Width (mm)	
7. Max. Wattage	60W	21. Net Weight (kg)	5.49
8. Lamp Holder Type	E27	22. Gross Weight (kg)	6.1
9. No. of Lamps	1	23. Back Plate Height (mm)	
10. Lamp Supplied	No	24. Build Materials	Steel
11. Lumen Output		25. Box Dimensions	68 x 36 x 32cm
12. Overall Height (mm)	616mm	26. Barcode	5.02401E+12
13. Overall Height With Shade (mm)		27. Guarantee	general 2 year guarantee
14. Width (mm)	286mm		