

# Table Light

## INSTRUCTION MANUAL

### Safety Warnings

- Do not plug into the mains until your lamp is fully assembled.
- Under no circumstances must this table lamp be covered with any material as this could pose a safety hazard. It must be used on a stable, flat surface.
- This product is not suitable for persons under 14 years of age.
- This product is only suitable for connection to 220-240V~50Hz supply, indoor use only and is *not* suitable for a Bathroom location.
- This fitting is a Class II, Double Insulated product. The Fitting does not require an Earth, and Live or Neutral must not be connected to Earth.
- The Floor Lamp must be protected by a 3 amp fuse in the mains plug.
- If the mains cable becomes damaged it must only be replaced by a technically competent, qualified person.
- Clean with a dry cloth only. Do not use liquid or abrasive cleaners on this product, and allow 10 minutes to cool before replacing adjusting or cleaning.
- If any modification is made it will invalidate the warranty and may render the product unsafe.

### Assembly/ User Instructions

#### Before you start

Please read these instructions carefully before fitting and retain for reference. Check the packaging and make sure that you have all the required parts. Follow each assembly step in order to prevent incorrect assembly. Ensure that the product is fully assembled as illustrated before use.

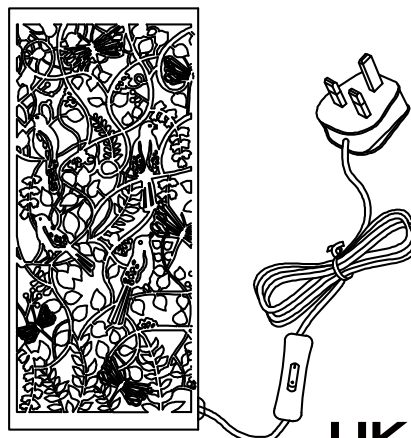
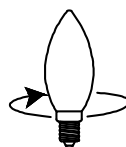
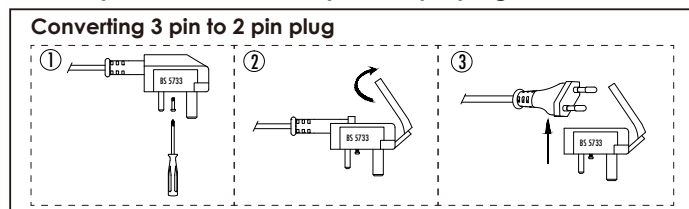
**Please note: While all the steps to assemble your lamp will be the same, your individual product may vary from that below.**

1. Carefully unpack your Table Lamp.
2. Place your Table lamp on a stable, flat surface.
3. Install the Bulb. Do not install a bulb with a greater wattage or different shape than specified on the label.
4. Plug in and operate the in-line switch to turn your Table Lamp on.

**If your Table Lamp will not illuminate, please check the bulb, the 3 amp fuse in the plug and ultimately check the relevant fuse in your Fuse Box. If unsuccessful please consult your Retailer.**

**Switch off, remove plug and allow 10 minutes to cool before replacing bulb(s) or cleaning using only a dry cloth.**

To use this item in Europe, the 3 pin adaptor can be removed by loosening the central screw and removing the adaptor to reveal the 2 pin Europe plug.



- EN Scan QR code for multi-language
- FR Scannez le code QR pour plusieurs langues
- ES Escanee el código QR para varios idiomas
- PL Zeskanuj kod QR dla wielu języków
- DE Scannen Sie den QR-Code nach mehreren Sprachen
- IT Scansiona il codice QR per multilingua



UK Manufacturer: BH17 7BY  
EU Manufacturer: Brilliant AG,  
Brilliantstrasse 1, D-27442 Gnarrenburg