

Pendant

INSTRUCTION MANUAL

Safety Warnings

- These products are only suitable for connection to a 240V~50Hz supply in accordance with current IEE wiring Regulations and should be installed in accordance with local Building Regulations and are for Domestic ceiling use only. They are not suitable for a Bathroom location.
- Before installing your light fitting always switch off the mains supply and remove the appropriate fuse or switch off the appropriate circuit breaker before commencing installation.
- This is a Class I product. This Fitting **must** be connected to Earth. The terminal blocks are supplied according to requirements of the fitting.
- Never fit bulbs of a higher wattage than those specified on the label (as these may cause overheating and damage the fitting).
- If you are in any doubt about your competence please consult a qualified electrician.
- If any modification is made it will invalidate the warranty and may render the product unsafe.

Care Information

Allow 10 minutes to cool before replacing, adjusting or cleaning.
Clean with a dry cloth only. Do not use liquid or abrasive cleaners on this product.

Assembly/ User Instructions

Before you start

Please read these instructions carefully before fitting and retain for reference.
Check the packaging and make sure that you have all the required parts.
Follow each assembly step in order to prevent incorrect assembly.
Ensure that the product is fully assembled as illustrated before use.

Please note - This instruction covers both 5 & 8-light versions of this fitting.

The Light pack contains:

Light fitting.
Terminal connection block(s).
Fixing pack.

The following tools may be required:

Selection of cross and flat head screwdrivers.
Electric drill and assorted drill bits.
Wire strippers.
Electrical insulation tape.
Allen Keys

These assembly diagrams are intended as a guide – if in doubt consult a qualified electrician.

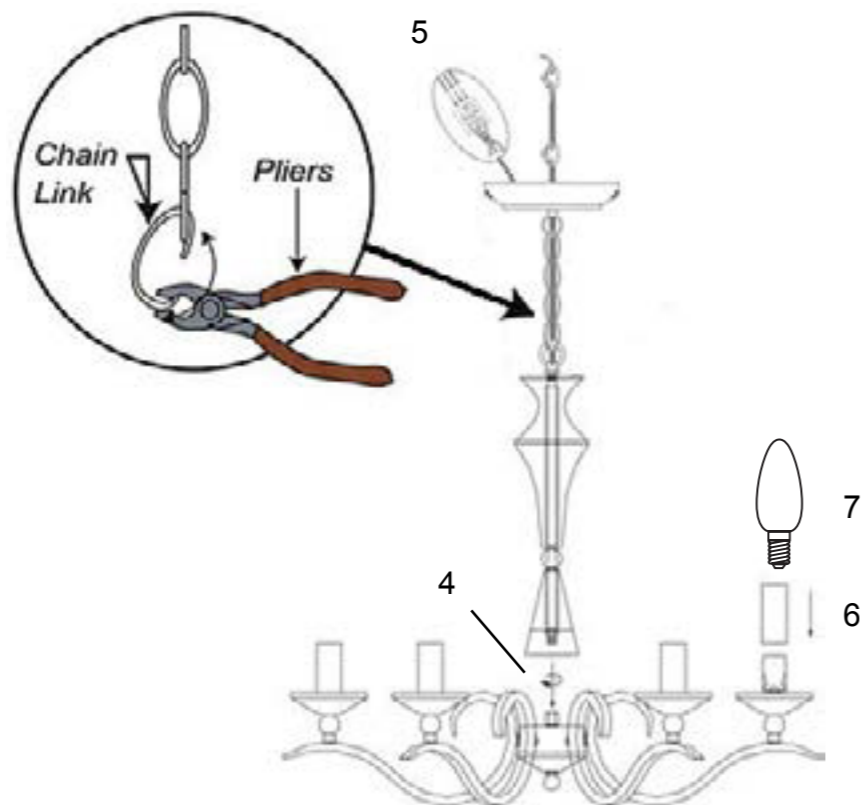
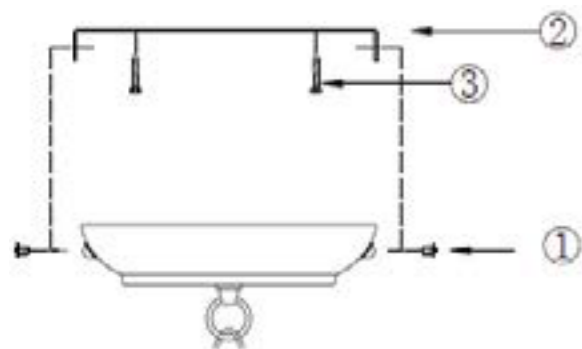
1. Decide on the position of the light fitting / or remove existing light fitting. Take a note of the position of the electrical connections. Ensure there is a solid mounting surface, preferably a wooden joist or joist bridge to support the weight of the light fitting.
 2. If you want to reduce the overall length of the fitting it is essential that this is done before the fitting is mounted to the ceiling and / or connected to the mains supply. If you want to remove the chain assembly and convert to a flush fitting, follow the guide on page 3 of this instruction.
- To reduce the length of the fitting: Remove the chain links until the desired length is reached. The cable must now be shortened and the excess cable cut and re-connected to the terminal block. Feed the cable up through the plastic bush and form a loop above the ceiling cup, moving the figure of 8 cable restraint down the exposed cable. **NOTE: The electric cable must always be longer than the chain to prevent strain**



Assembly/ User Instructions Continued

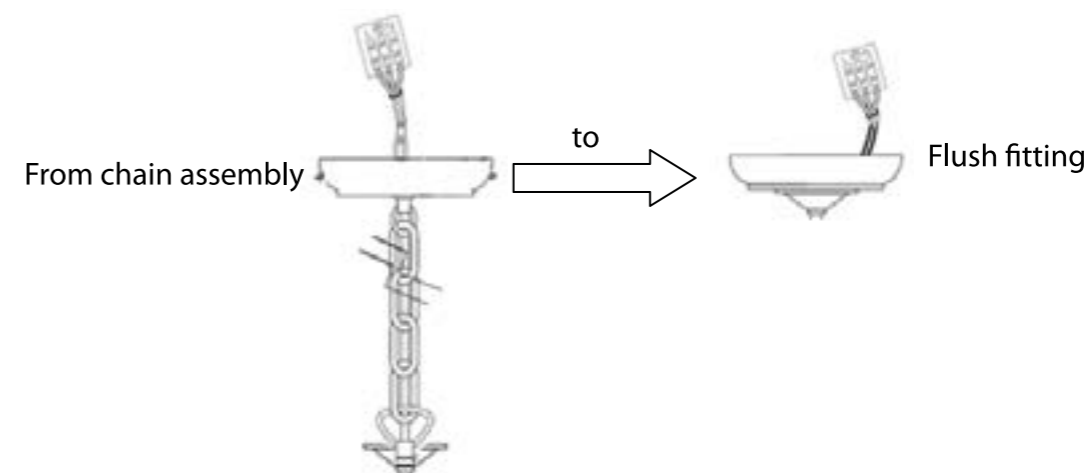
being placed on the cable. **If you are unsure about your ability to do this, we recommend you contact a qualified electrician.**

- Remove the side screws (1) and retain them for re-use. Use the fixing bracket (2) as a template to mark the screw holes, and secure to the ceiling with appropriate screw fixings (3).
- Ensure that the chain assembly is screwed onto the main body of the fitting at point (4), making sure that the cable is not twisted and strained.
- Support your fitting and connect the house wiring to the terminal block (5) – see wiring details. **NOTE: This is a Class I fitting and must be earthed.** The 4th terminal block connector is used for the “loop” wires of the “Ring Circuit”. There may be more than one set of cables in the “loop” connections. If there is a “Ring Circuit” and you do not understand the connections you must consult an electrician. Any loose terminal blocks - not secured to ceiling cup - should always be covered with two layers of good quality insulation tape.
- Secure the fitting back onto the fixing bracket with the two side screws (1), removed in Point 3. Make sure that all the internal cables and connections are inside the ceiling cup, taking care not to trap or strain the internal cables.
- Fit the candle drips (5) over the lamp holder and fit the bulbs (6). **NOTE: Never fit bulbs of a higher wattage than those specified on the label (as these may cause overheating and damage the fitting).**
- Turn on the power and test.

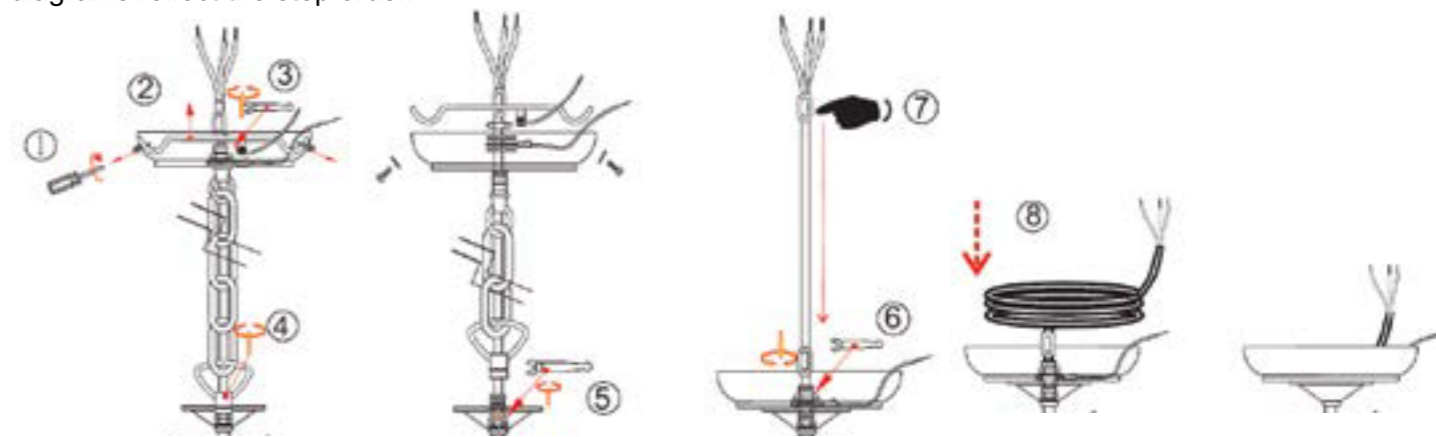


5. Expanded wiring diagram

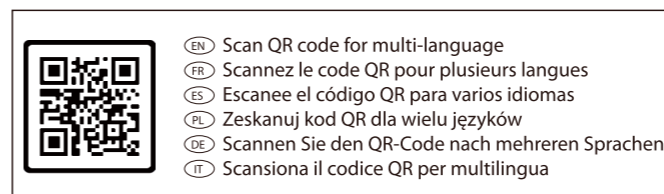
To convert from Chain Assembly to Flush Fitting



- First disconnect the internal cables from the terminal block. Make note of the positioning of the cables including any flying earth leads which are connected to the terminal block - from the central nut assembly and/ or the ceiling bracket.
- Use the following sequence of diagrams as a guide to removing the Chain Assembly. The numbers in the diagrams reflect the step order.



- Unscrew the side screws in the ceiling cup.
- Remove the ceiling bracket. **NOTE: This bracket may have a flying earth lead on it – if it has then this will have to be connected back to the terminal block after the conversion.**
- Undo the nut assembly inside the ceiling cup. **Do not remove this nut assembly yet but make a note of the position of the washers/ nuts/ flying earth leads etc. so that when they are re-assembled they are in the same order and earth continuity is maintained.**
- Unscrew the lower chain ring assembly from its threaded mount.
- There may be a nut under the chain ring assembly (4), if there is, unscrew it (raising it up the thread) so that it is level with the top of the small cup shown. If there is not a small cup then this nut may be removed (to provide a level surface for when this section goes under the ceiling cup).
- Slide all the parts off the cable, remembering the sequence of nuts / washers / earth leads etc in (3) above. The chain assembly can now be discarded (or retained in case it is needed again). Slide the ceiling cup down the cable to rest on top of the small cup – shown in step (5). Reconnect the nut assembly inside the ceiling cup – removed in (3) above – ensuring that it is assembled in the same sequence to make sure earth continuity is maintained.
- Re-fit the figure of 8 cable restraint, sliding it down the cable to just above the position where the cable enters the ceiling cup.
- Remove the excess cable from inside the ceiling cup making sure that there is enough cable left to strip back and reconnect to the terminal block.



- Re-Connect the internal cable – including any flying earth leads – to the terminal block. Continue with the rest of the User Assembly Instructions.

