

PHOTOMETRIC TEST REPORT

VERSAILLES 400 PHASE DIMMABLE
MATT GOLD

astro

VERSAILLES 400 PHASE DIMMABLE MATT GOLD

astro

LIGHT EFFICIENCY:

92 Lumen/Watt

OUTPUT: 658 lm

LIGHT QUALITY:

CRI: 87.6

PEAK: 136 cd

COLOR TEMPERATURE:

3009 K

POWER: 7.1 W

PF: 0.91



Tracking number: [n/a](#)

Product name:

Versailles 400 Phase Dimmable Matt Gold

Item number:

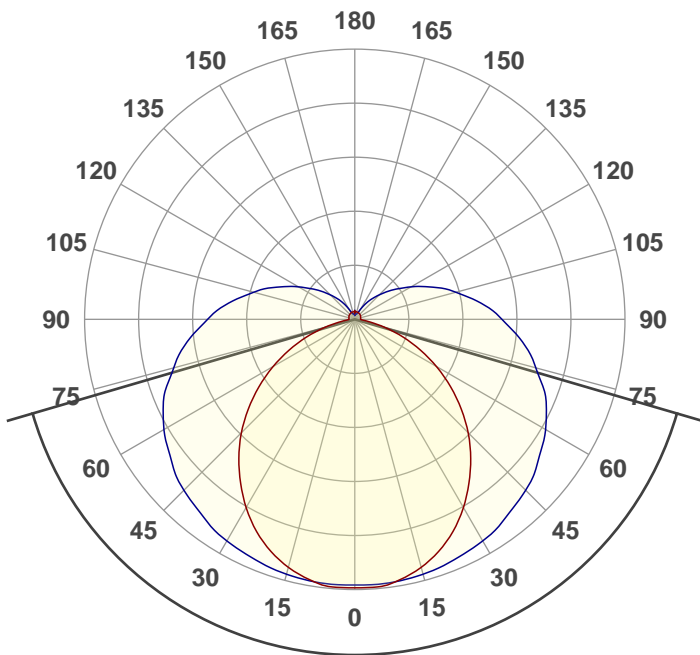
1380031

Date and time:

23/02/2021 12:11:26

Description:

IP44 Bathroom Wall Light

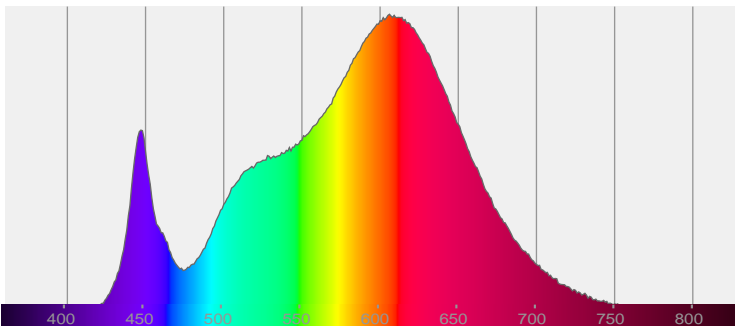


147.4°

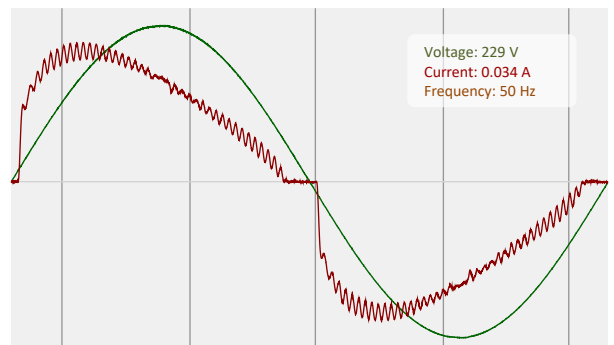


CIE 1931
x: 0.434
y: 0.398

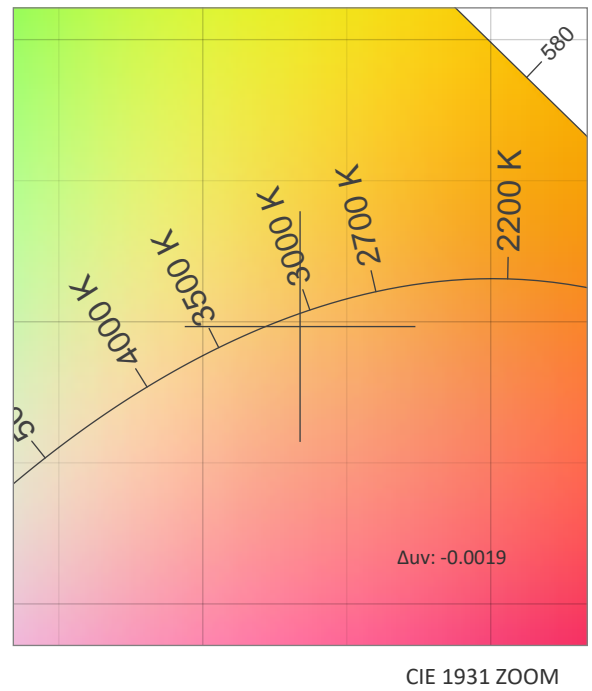
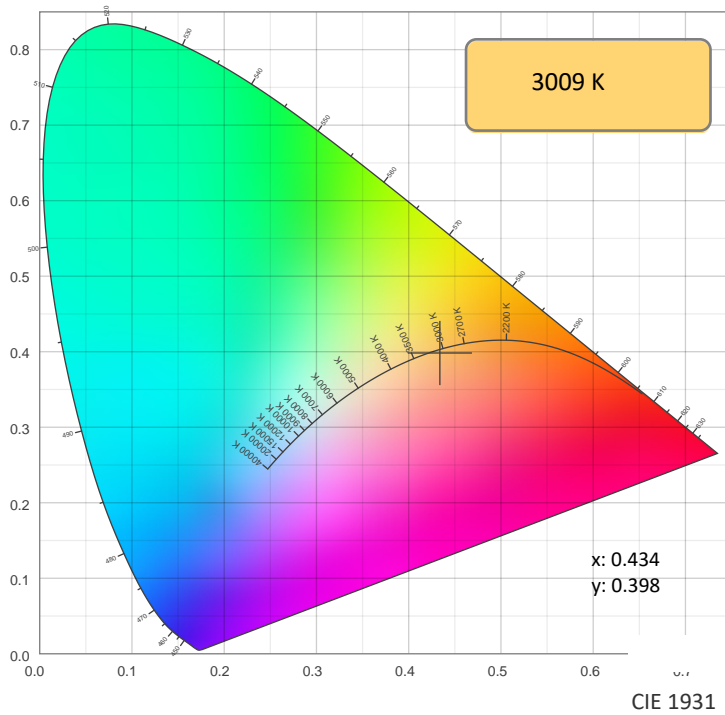
SPECTRA



POWER

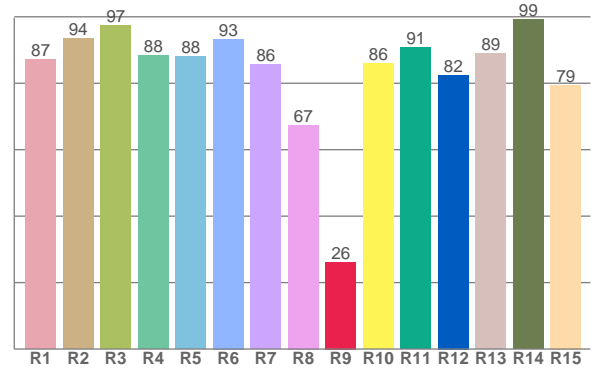
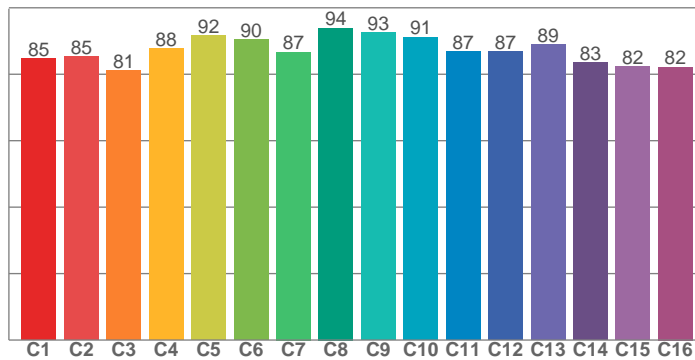


COLOR DETAILS



TM30: 87.4

CRI: 87.6 (R1-R8)



CRI R values, only R1-R8 are used to calculate final CRI value

R1	R2	R3	R4	R5	R6	R7	R8	R9	R10	R11	R12	R13	R14	R15
87.2	93.5	97.3	88.3	88.0	93.3	85.6	67.4	26.2	85.9	90.7	82.5	88.9	99.1	79.5

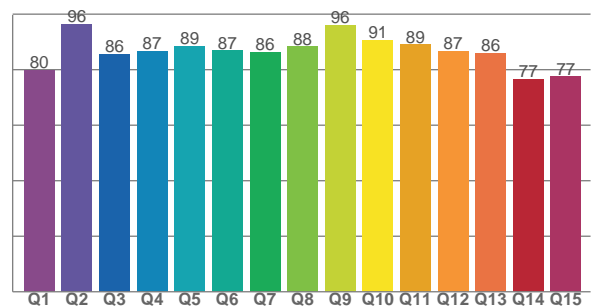
TM30 C values, 16 binned values out of total of 99 C values

C1	C2	C3	C4	C5	C6	C7	C8	C9	C10	C11	C12	C13	C14	C15	C16
84.6	85.3	81.1	87.8	91.7	90.4	86.7	93.9	92.7	91.2	86.8	86.8	89.0	83.4	82.3	82.2

CQS Q values

Q1	Q2	Q3	Q4	Q5	Q6	Q7	Q8	Q9	Q10	Q11	Q12	Q13	Q14	Q15
79.9	96.3	85.7	86.8	88.5	86.8	86.3	88.4	96.0	90.7	89.1	86.7	86.0	76.6	77.5

CQS: 85.6



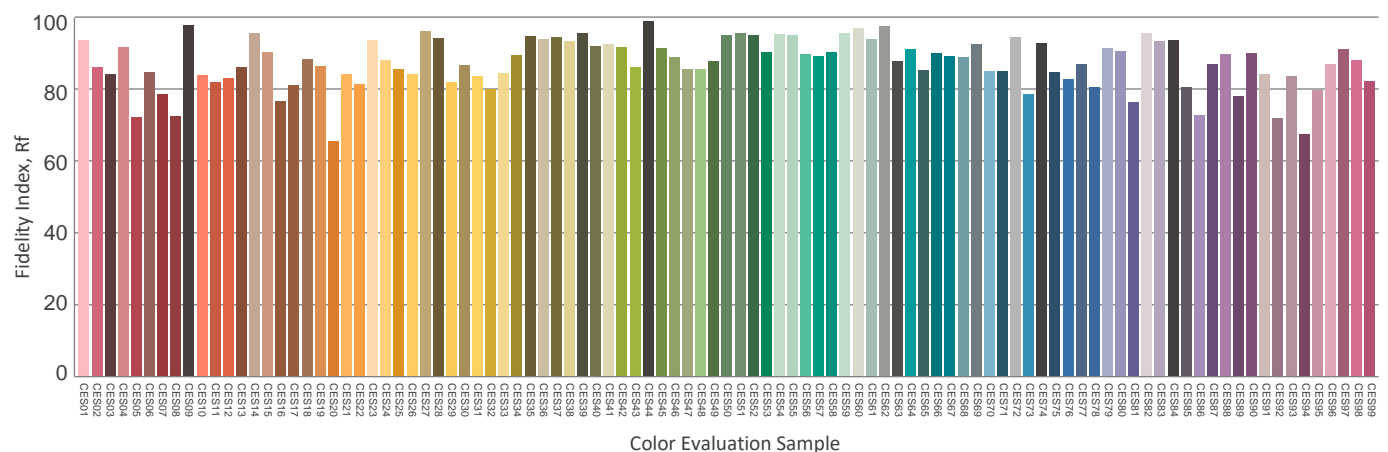
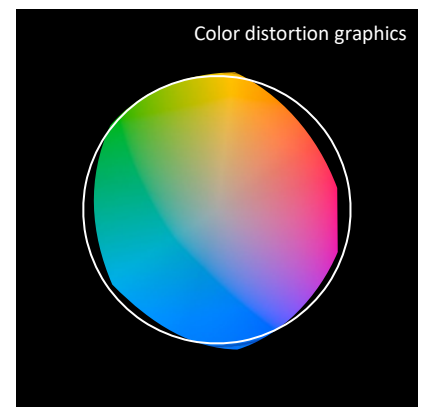
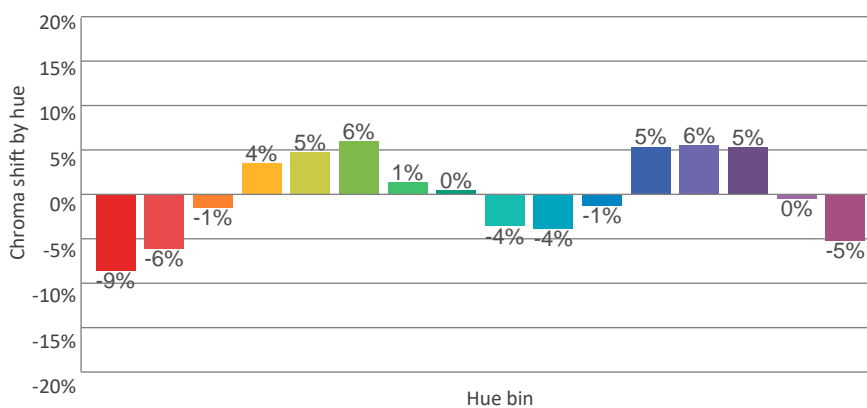
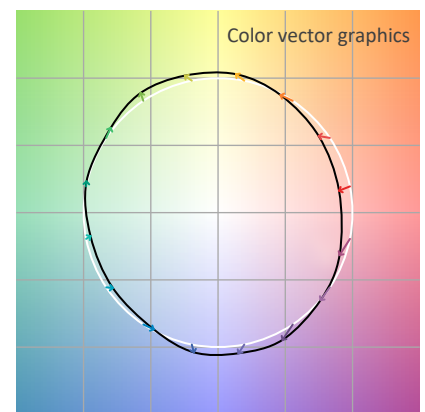
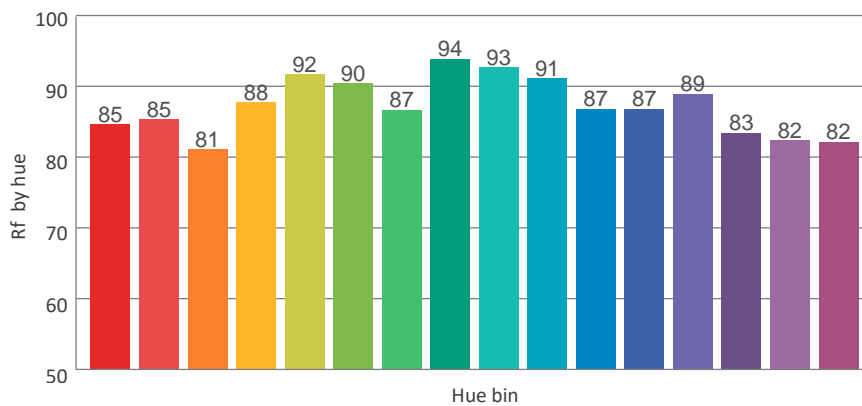
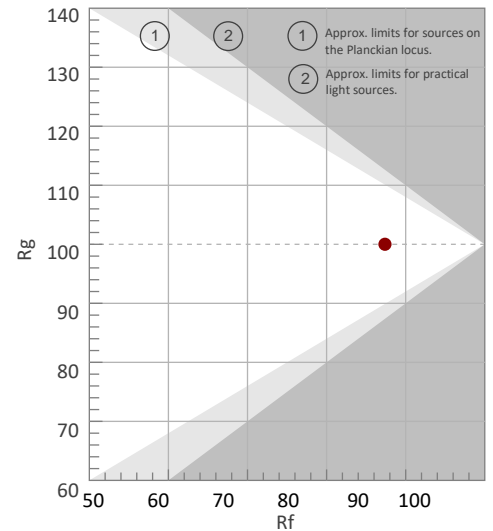
COLOR PARAMETERS

Color temperature	Color rendering index	Red component	Color fidelity	Color gamut	Color quality scale	Color coordinate cie 1931	Color coordinate cie 1931	Color coordinate	Color coordinate	Color deviation from black body
CCT	CRI	CRI R9	TM30 Rf	TM30 Rg	CQS	x	y	u	v	Δuv
3009 K	87.6	26.2	87.4	100.0	85.6	0.434	0.398	0.251	0.346	-0.0019

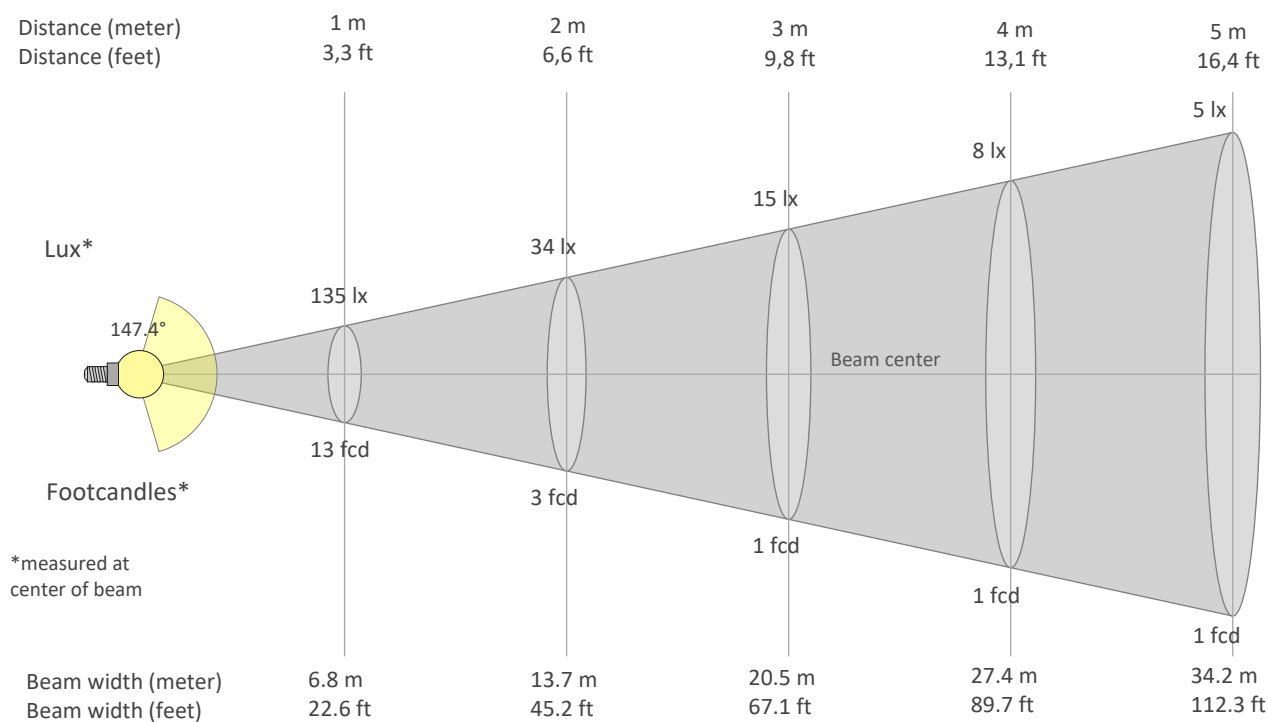
Rf 87.4
Fidelity index Rf

Rg 100.0
Gammut index Rg

Hue Bin	Graphic shifts (%)		
	R _f	Chroma	Hue
1	85	-9%	-2%
2	85	-6%	6%
3	81	-1%	10%
4	88	4%	7%
5	92	5%	4%
6	90	6%	-2%
7	87	1%	-8%
8	94	0%	-4%
9	93	-4%	-1%
10	91	-4%	3%
11	87	-1%	8%
12	87	5%	3%
13	89	6%	-5%
14	83	5%	-13%
15	82	0%	-12%
16	82	-5%	-13%



BEAM DETAILS



Beam intensities from 1-20m

1m	2m	3m	4m	5m	6m	7m	8m	9m	10m	11m	12m	13m	14m	15m	16m	17m	18m	19m	20m
3.3ft	6.6ft	9.8ft	13.1ft	16.4ft	19.7ft	23ft	26.2ft	29.5ft	32.8ft	36.1ft	39.4ft	42.7ft	45.9ft	49.2ft	52.5ft	55.8ft	59.1ft	62.3ft	65.6ft
135lx	34lx	15lx	8lx	5lx	4lx	3lx	2lx	2lx	1lx	1lx	1lx	1lx	1lx	1lx	1lx	0lx	0lx	0lx	0lx
12.6fcd	3.1fcd	1.4fcd	0.8fcd	0.5fcd	0.3fcd	0.3fcd	0.2fcd	0.2fcd	0.1fcd	0.1fcd	0.1fcd	0.1fcd	0.1fcd	0.1fcd	0fcd	0fcd	0fcd	0fcd	0fcd

Intensities in 0° c-plane

0°	9°	18°	27°	36°	45°	54°	63°	72°	81°	90°	99°	108°	117°	126°	135°	144°	153°	162°	171°
135	134	127	115	99	81	61	41	22	7	3	3	3	3	3	4	4	4	4	4
100%	99%	94%	85%	73%	60%	45%	30%	16%	5%	2%	2%	2%	2%	3%	3%	3%	3%	3%	3%

Intensities in 90° c-plane

0°	9°	18°	27°	36°	45°	54°	63°	72°	81°	90°	99°	108°	117°	126°	135°	144°	153°	162°	171°
135	134	133	130	127	122	116	109	99	87	75	62	49	37	26	18	11	4	3	2
100%	99%	98%	96%	94%	90%	86%	80%	73%	65%	55%	46%	36%	27%	19%	13%	8%	3%	2%	2%

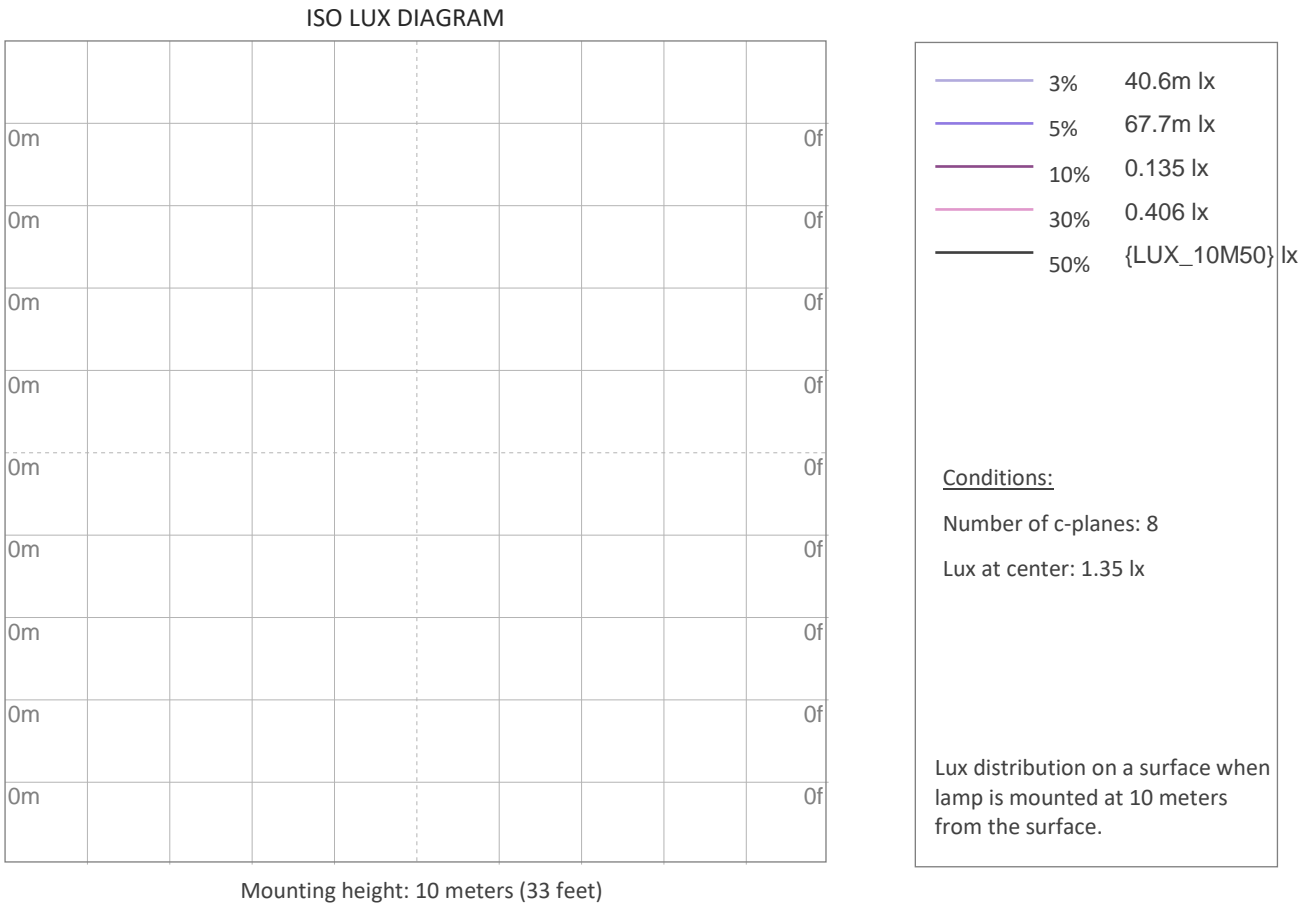
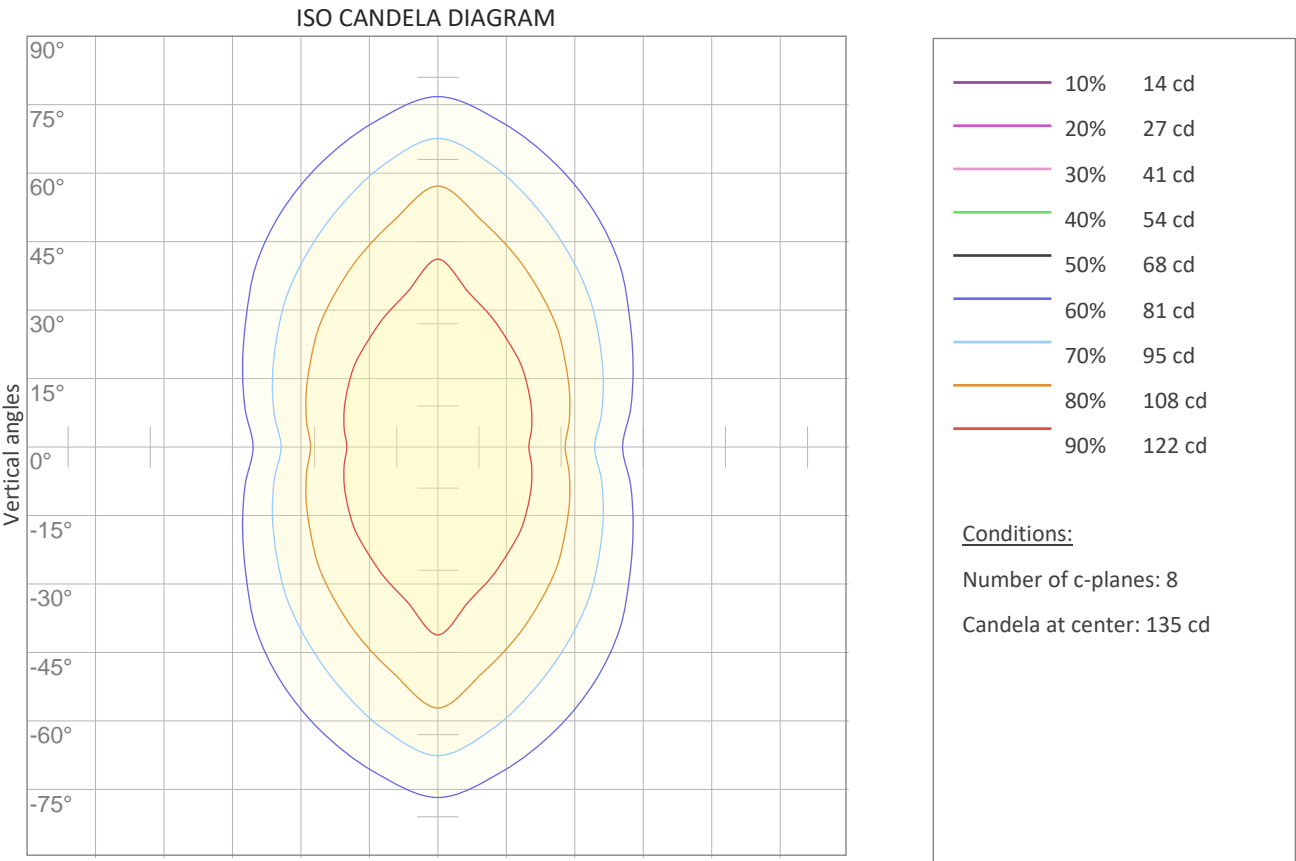
Intensities in 180° c-plane

0°	9°	18°	27°	36°	45°	54°	63°	72°	81°	90°	99°	108°	117°	126°	135°	144°	153°	162°	171°
135	134	127	115	99	81	61	41	22	7	3	3	3	3	3	4	4	4	4	4
100%	99%	94%	85%	73%	60%	45%	30%	16%	5%	2%	2%	2%	2%	3%	3%	3%	3%	3%	3%

Intensities in 270° c-plane

0°	9°	18°	27°	36°	45°	54°	63°	72°	81°	90°	99°	108°	117°	126°	135°	144°	153°	162°	171°
135	134	133	130	127	122	116	109	99	87	75	62	49	37	26	18	11	4	3	2
100%	99%	98%	96%	94%	90%	86%	80%	73%	65%	55%	46%	36%	27%	19%	13%	8%	3%	2%	2%

Beam angle 50%	Field angle 10%	Cutoff angle 2,5%	Intensity ratio in 120° cone	Intensity ratio in 90° cone
147.4°	237.7°	326.1°	51.5%	33.2%



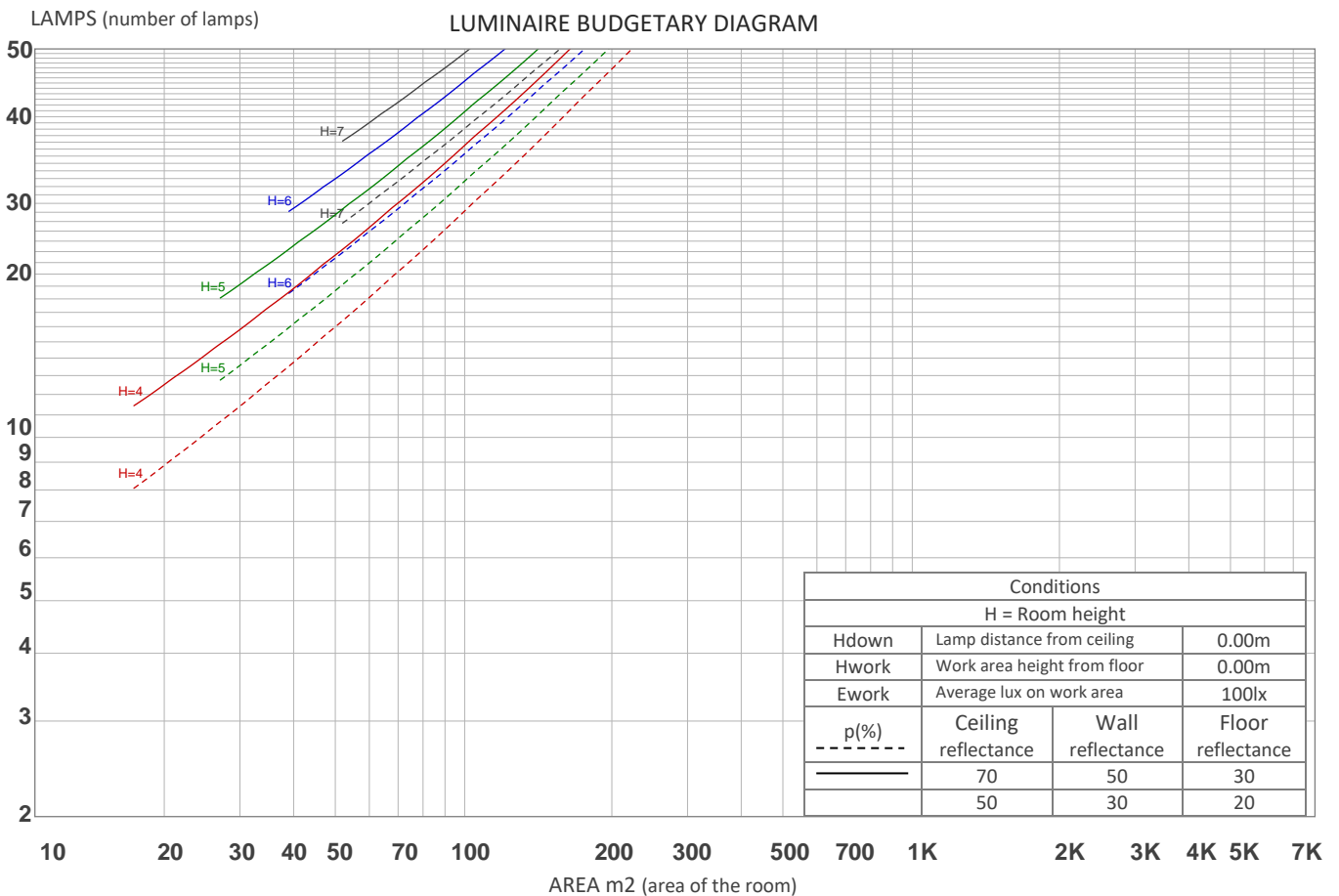
UGR

GLARE EVALUATION ACCORDING TO UGR

p Ceiling		70	70	50	50	30	70	70	50	50	30
p Walls		50	30	50	30	30	50	30	50	30	30
p Floor		20	20	20	20	20	20	20	20	20	20
Room size X Y		Viewing direction at right angles to lamp axis					Viewing direction parallel to lamp axis				
2H	2H	11.3	12.4	11.8	13.0	13.7	15.0	16.1	15.5	16.7	17.4
	3H	12.2	13.4	12.9	14.0	14.6	17.6	18.7	18.2	19.3	19.9
	4H	12.6	13.6	13.2	14.2	14.9	19.0	20.1	19.6	20.7	21.3
	6H	12.7	13.7	13.3	14.3	15.0	20.5	21.5	21.1	22.1	22.8
	8H	12.8	13.8	13.4	14.3	15.1	21.2	22.2	21.8	22.8	23.5
	12H	12.7	13.8	13.4	14.3	15.1	22.0	23.0	22.6	23.5	24.3
4H	2H	12.5	13.6	13.2	14.2	14.9	15.3	16.4	15.9	17.0	17.6
	3H	13.9	14.9	14.5	15.5	16.2	18.2	19.2	18.8	19.7	20.5
	4H	14.4	15.5	15.0	15.9	16.8	19.6	20.7	20.3	21.2	22.0
	6H	14.7	15.5	15.4	16.2	16.9	21.3	22.1	22.0	22.8	23.5
	8H	14.8	15.5	15.5	16.2	16.9	22.1	22.9	22.8	23.5	24.3
	12H	14.8	15.4	15.5	16.1	16.9	23.0	23.6	23.7	24.3	25.1
8H	4H	15.5	16.2	16.2	16.9	17.6	19.8	20.5	20.5	21.2	21.9
	6H	16.1	16.7	16.9	17.5	18.3	21.6	22.2	22.4	23.0	23.8
	8H	16.4	16.9	17.1	17.7	18.6	22.6	23.1	23.4	23.9	24.8
	12H	16.5	17.0	17.3	17.8	18.6	23.7	24.1	24.5	24.9	25.8
12H	4H	15.8	16.4	16.5	17.1	17.9	19.8	20.4	20.5	21.1	21.9
	6H	16.6	17.2	17.4	17.9	18.9	21.7	22.2	22.4	23.0	23.9
	8H	17.0	17.5	17.8	18.2	19.1	22.7	23.2	23.5	23.9	24.8
Variation of the observer position for the luminaire distance S											
S = 1.0H		0.1 / -0.1					0.1 / -0.1				
S = 1.5H		0.2 / -0.3					0.2 / -0.2				
S = 2.0H		0.4 / -0.7					0.3 / -0.3				
Standard table		n/a					n/a				
Correction summand		n/a					n/a				
Corrected glare indices referring to 658 lm total luminous flux											

COEFFICIENTS OF UTILIZATION

Ceiling reflectance	80				70				50			30			10			0
Wall reflectance	70	50	30	10	70	50	30	10	50	30	10	50	30	10	50	30	10	0
Floor reflectance	20	20	20	20	20	20	20	20	20	20	20	20	20	20	20	20	20	0
RCR	(RCR: Room Cavity Ratio) Room Values are expressed as percentage of Lumens delivered to the task surface																	
0	114	114	114	114	110	110	110	110	100	100	100	92	92	92	84	84	84	81
1	101	95	89	84	96	91	86	81	83	79	75	76	72	69	69	66	64	60
2	91	81	73	66	86	77	70	64	71	65	60	64	60	55	59	55	51	48
3	82	70	61	54	78	67	59	52	61	54	49	56	50	45	51	46	42	39
4	75	61	52	45	71	59	50	43	54	46	41	49	43	38	45	40	35	33
5	68	55	45	38	65	52	43	37	48	40	35	44	37	32	40	35	30	28
6	63	49	39	33	60	47	38	32	43	36	30	39	33	28	36	31	26	24
7	58	44	35	28	55	42	34	28	39	32	26	36	29	25	33	27	23	21
8	54	40	31	25	51	38	30	24	35	28	23	33	26	22	30	25	21	18
9	50	37	28	22	48	35	27	22	33	26	21	30	24	20	28	22	19	16
10	47	34	25	20	45	32	25	20	30	23	19	28	22	18	26	21	17	15



ZONAL LUMEN SUMMARY

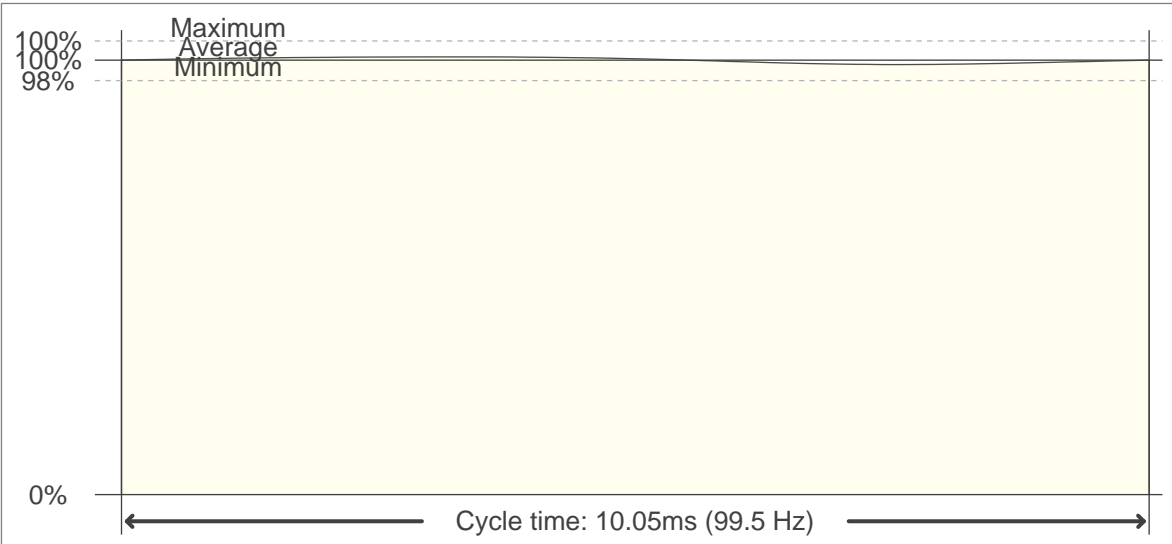
0°-10°	10°-20°	20°-30°	30°-40°	40°-50°	50°-60°	60°-70°	70°-80°	80°-90°
12.9 lm	37.2 lm	57.5 lm	71.7 lm	79.4 lm	79.8 lm	74.4 lm	64.8 lm	53.5 lm
90°-100°	100°-110°	110°-120°	120°-130°	130°-140°	140°-150°	150°-160°	160°-170°	170°-180°
42.8 lm	32.1 lm	22.2 lm	14.2 lm	8.15 lm	3.81 lm	1.72 lm	0.936 lm	0.312 lm

FLICKER

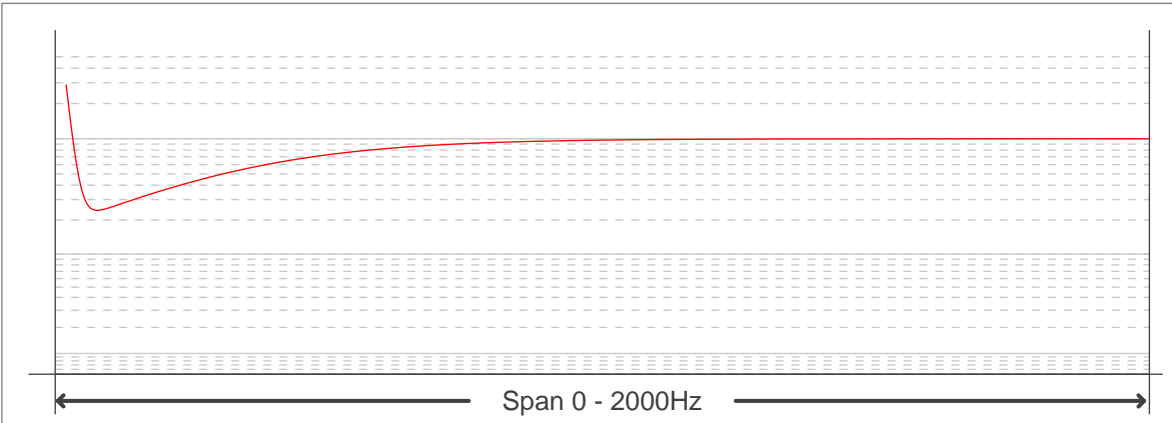
FLICKER CURVE (COMPLETE SAMPLED FLICKER)



FLICKER FRAME (FRAME OF ONE FLICKER PERIOD)



FLICKER FFT (FREQUENCY SCOPE OF FLICKER CURVE)



FLICKER RESULTS:

Flicker frequency:	99.5 Hz
Flicker index:	0
Flicker percentage:	0.9 %
SVM: (Visual flicker)	0.03

FLICKER CONDITIONS:

Sample rate:	20000 samples/second
--------------	----------------------